



Location: CMA1b - Oil St Community Liaison Centre

Report on 24-hour TSP monitoring

Action Level ($\mu\text{g}/\text{m}^3$) - 176.7

Limit Level ($\mu\text{g}/\text{m}^3$) - 260

Date	Sampling Time	Weather Condition	Filter paper no.	Filter Weight, g		Elapse Time, hr		Sampling Time, hr	Flow Rate, m^3/min			Total Volume, m^3	TSP Level, $\mu\text{g}/\text{m}^3$
				Initial	Final	Initial	Final		Initial, Q_{si}	Final, Q_{sf}	Average		
31-May-12	8:00	Fine	002863	2.7732	2.9368	1094.76	1118.77	24.01	1.09	1.09	1.09	1575	104
7-Jun-12	16:10	Fine	003081	2.8110	2.9116	1138.80	1162.80	24.00	1.18	0.49	0.84	1205	83
12-Jun-12	8:00	Cloudy	003047	2.8055	2.9171	1162.80	1186.79	23.99	1.18	1.18	1.18	1700	66
18-Jun-12	8:00	Cloudy	002821	2.7706	2.8752	1189.79	1213.79	24.00	1.13	1.18	1.16	1665	63
22-Jun-12	8:00	Cloudy	003044	2.7992	2.9059	1216.79	1240.79	24.00	1.00	1.09	1.05	1507	71

* Due to lack of electricity supply, the 24 hr-TSP was rescheduled from 6 June 2012 to 7 June 2012

Report on 1-hour TSP monitoring

Action Level ($\mu\text{g}/\text{m}^3$) - 320.1

Limit Level ($\mu\text{g}/\text{m}^3$) - 500

Date	Sampling Time	Weather Condition	Filter paper no.	Filter Weight, g		Elapse Time, hr		Sampling Time, hr	Flow Rate, m^3/min			Total Volume, m^3	TSP Level, $\mu\text{g}/\text{m}^3$
				Initial	Final	Initial	Final		Initial, Q_{si}	Final, Q_{sf}	Average		
1-Jun-12	8:28	Fine	002828	2.7990	2.8164	1118.77	1119.77	1.00	1.19	1.14	1.16	70	250
1-Jun-12	9:51	Fine	002826	2.7892	2.8017	1119.77	1120.77	1.00	1.16	1.14	1.15	69	181
1-Jun-12	11:00	Fine	002824	2.7813	2.7961	1120.77	1121.77	1.00	1.14	1.14	1.14	68	217
7-Jun-12	13:00	Fine	002853	2.7687	2.7802	1135.80	1136.80	1.00	1.18	1.07	1.12	67	170
7-Jun-12	14:02	Fine	003071	2.8188	2.8295	1136.80	1137.80	1.00	1.34	1.34	1.34	81	133
7-Jun-12	15:05	Fine	003082	2.7908	2.8005	1137.80	1138.80	1.00	1.16	1.18	1.17	70	138
13-Jun-12	8:18	Cloudy	002830	2.7774	2.7811	1186.79	1187.79	1.00	1.18	1.16	1.17	70	53
13-Jun-12	9:31	Cloudy	002911	2.7561	2.7596	1187.79	1188.79	1.00	1.18	1.18	1.18	71	49
13-Jun-12	10:39	Cloudy	002589	2.7634	2.7661	1188.79	1189.79	1.00	1.20	1.18	1.19	72	38
19-Jun-12	8:11	Cloudy	002819	2.7891	2.7940	1213.79	1214.79	1.00	1.18	1.18	1.18	71	69
19-Jun-12	9:29	Cloudy	002816	2.7864	2.7897	1214.79	1215.79	1.00	1.18	1.22	1.20	72	46
19-Jun-12	10:28	Cloudy	002813	2.7495	2.7552	1215.79	1216.79	1.00	1.20	1.18	1.19	71	80
25-Jun-12	8:45	Fine	003039	2.8025	2.8120	1240.79	1241.79	1.00	1.19	1.19	1.19	71	133
25-Jun-12	9:52	Fine	003037	2.8194	2.8309	1241.79	1242.79	1.00	1.19	1.19	1.19	71	161
25-Jun-12	10:55	Fine	003035	2.7969	2.8091	1242.79	1243.79	1.00	1.19	1.19	1.19	71	171



Location: CMA2a - Causeway Bay Community Centre

Report on 24-hour TSP monitoring
 Action Level ($\mu\text{g}/\text{m}^3$) - 169.5
 Limit Level ($\mu\text{g}/\text{m}^3$) - 260

Date	Sampling Time	Weather Condition	Filter paper no.	Filter Weight, g		Elapse Time, hr		Sampling Time, hr	Flow Rate, m^3/min			Total Volume, m^3	TSP Level, $\mu\text{g}/\text{m}^3$
				Initial	Final	Initial	Final		Initial, Q_{si}	Final, Q_{sf}	Average		
31-May-12	8:00	Fine	002864	2.7717	2.8976	10819.32	10843.32	24.00	1.36	1.40	1.38	1985	63
6-Jun-12	8:00	Fine	002855	2.7604	2.8848	10846.36	10870.36	24.00	1.40	1.40	1.40	2013	62
12-Jun-12	8:00	Cloudy	003070	2.8185	2.9679	10873.36	10897.35	23.99	1.42	1.42	1.42	2045	73
19-Jun-12	8:00	Cloudy	002820	2.7879	2.8817	10900.35	10924.35	24.00	1.42	1.42	1.42	2042	46
22-Jun-12	8:00	Cloudy	003043	2.7996	2.9730	10927.35	10951.35	24.00	1.36	1.38	1.37	1969	88

* Due to lack of electricity supply, the 24 hr-TSP was rescheduled from 18 June 2012 to 19 June 2012

Report on 1-hour TSP monitoring
 Action Level ($\mu\text{g}/\text{m}^3$) - 323.4
 Limit Level ($\mu\text{g}/\text{m}^3$) - 500

Date	Sampling Time	Weather Condition	Filter paper no.	Filter Weight, g		Elapse Time, hr		Sampling Time, hr	Flow Rate, m^3/min			Total Volume, m^3	TSP Level, $\mu\text{g}/\text{m}^3$
				Initial	Final	Initial	Final		Initial, Q_{si}	Final, Q_{sf}	Average		
1-Jun-12	8:50	Fine	002827	2.7880	2.7979	10843.32	10844.32	1.00	1.40	1.40	1.40	84	118
1-Jun-12	10:00	Fine	002825	2.7794	2.7903	10844.32	10845.32	1.00	1.40	1.40	1.40	84	130
1-Jun-12	11:00	Fine	002823	2.7827	2.7948	10845.36	10846.36	1.00	1.40	1.40	1.40	84	144
7-Jun-12	8:00	Fine	002854	2.7796	2.7847	10870.36	10871.36	1.00	1.35	1.35	1.35	81	63
7-Jun-12	9:17	Fine	002852	2.7830	2.7900	10871.36	10872.36	1.00	1.40	1.40	1.40	84	83
7-Jun-12	11:00	Fine	002851	2.7834	2.7922	10872.36	10873.36	1.00	1.40	1.40	1.40	84	105
13-Jun-12	8:29	Cloudy	002912	2.7722	2.7758	10897.35	10898.35	1.00	1.35	1.40	1.37	82	44
13-Jun-12	9:41	Cloudy	002590	2.7306	2.7360	10898.35	10899.35	1.00	1.35	1.42	1.39	83	65
13-Jun-12	10:48	Cloudy	002588	2.7703	2.7789	10899.35	10900.35	1.00	1.40	1.42	1.41	84	102
19-Jun-12	8:23	Cloudy	002818	2.7907	2.7962	10924.35	10925.35	1.00	1.35	1.39	1.37	82	67
19-Jun-12	9:34	Cloudy	002815	2.7561	2.7629	10925.35	10926.35	1.00	1.35	1.42	1.38	83	82
19-Jun-12	10:39	Cloudy	003046	2.8002	2.8068	10926.35	10927.35	1.00	1.39	1.39	1.39	84	79
25-Jun-12	8:35	Fine	003040	2.7870	2.8034	10951.35	10952.35	1.00	1.38	1.38	1.38	83	198
25-Jun-12	9:40	Fine	003038	2.8096	2.8250	10952.35	10953.35	1.00	1.42	1.38	1.40	84	183
25-Jun-12	10:45	Fine	003036	2.8092	2.8258	10953.35	10954.35	1.00	1.42	1.38	1.40	84	198



Location: CMA3a - CWB PRE Site Office Area

Report on 24-hour TSP monitoring
Action Level ($\mu\text{g}/\text{m}^3$) - 171
Limit Level ($\mu\text{g}/\text{m}^3$) - 260

Date	Sampling Time	Weather Condition	Filter paper no.	Filter Weight, g		Elapse Time, hr		Sampling Time, hr	Flow Rate, m^3/min			Total Volume, m^3	TSP Level, $\mu\text{g}/\text{m}^3$
				Initial	Final	Initial	Final		Initial, Q_{si}	Final, Q_{sf}	Average		
31-May-12	8:00	Fine	002716	2.8030	2.9592	11514.85	11538.86	24.01	1.52	1.59	1.55	2236	70
6-Jun-12	8:00	Fine	002885	2.7893	2.9461	11541.86	11565.84	23.98	1.56	1.56	1.56	2244	70
12-Jun-12	8:00	Cloudy	003125	2.7556	2.8897	11568.84	11592.84	24.00	1.51	1.51	1.51	2176	62
18-Jun-12	8:00	Cloudy	003053	2.8004	2.9259	11595.84	11619.84	24.00	1.53	1.51	1.52	2190	57
22-Jun-12	8:00	Cloudy	003003	2.7673	2.9082	11622.84	11646.84	24.00	1.47	1.47	1.47	2123	66

Report on 1-hour TSP monitoring
Action Level ($\mu\text{g}/\text{m}^3$) - 311.3
Limit Level ($\mu\text{g}/\text{m}^3$) - 500

Date	Sampling Time	Weather Condition	Filter paper no.	Filter Weight, g		Elapse Time, hr		Sampling Time, hr	Flow Rate, m^3/min			Total Volume, m^3	TSP Level, $\mu\text{g}/\text{m}^3$
				Initial	Final	Initial	Final		Initial, Q_{si}	Final, Q_{sf}	Average		
1-Jun-12	8:27	Cloudy	002645	2.7722	2.7859	11538.86	11539.86	1.00	1.52	1.52	1.52	91	151
1-Jun-12	9:30	Cloudy	002634	2.7888	2.8023	11539.86	11540.86	1.00	1.52	1.52	1.52	91	148
1-Jun-12	10:32	Cloudy	002633	2.7951	2.8080	11540.86	11541.86	1.00	1.47	1.47	1.47	88	146
7-Jun-12	9:48	Fine	003112	2.8143	2.8237	11565.84	11566.84	1.00	1.56	1.51	1.54	92	102
7-Jun-12	10:58	Fine	003137	2.7670	2.7763	11566.84	11567.84	1.00	1.56	1.56	1.56	94	99
7-Jun-12	13:00	Fine	003136	2.7521	2.7627	11567.84	11568.84	1.00	1.56	1.56	1.56	94	113
13-Jun-12	9:33	Cloudy	003059	2.8001	2.8036	11592.84	11593.84	1.00	1.49	1.49	1.49	89	39
13-Jun-12	10:44	Cloudy	003057	2.8033	2.8094	11593.84	11594.84	1.00	1.51	1.51	1.51	91	67
13-Jun-12	13:00	Cloudy	003056	2.7818	2.7875	11594.84	11595.84	1.00	1.51	1.51	1.51	91	63
19-Jun-12	13:32	Cloudy	003009	2.7496	2.7584	11619.84	11620.84	1.00	1.46	1.46	1.46	88	100
19-Jun-12	14:42	Cloudy	003007	2.7536	2.7624	11620.84	11621.84	1.00	1.51	1.46	1.48	89	99
19-Jun-12	15:49	Cloudy	003006	2.7760	2.7842	11621.84	11622.84	1.00	1.46	1.46	1.46	88	94
25-Jun-12	8:41	Fine	002473	2.7063	2.7245	11646.84	11647.84	1.00	1.47	1.47	1.47	88	206
25-Jun-12	9:43	Fine	002471	2.7490	2.7675	11647.84	11648.84	1.00	1.47	1.47	1.47	88	209
25-Jun-12	10:45	Fine	002261	2.8022	2.8213	11648.84	11649.84	1.00	1.47	1.47	1.47	88	216



Location: CMA4a - SPCA

Report on 24-hour TSP monitoring

Action Level ($\mu\text{g}/\text{m}^3$) - 171.2

Limit Level ($\mu\text{g}/\text{m}^3$) - 260

Date	Sampling Time	Weather Condition	Filter paper no.	Filter Weight, g		Elapse Time, hr		Sampling Time, hr	Flow Rate, m^3/min			Total Volume, m^3	TSP Level, $\mu\text{g}/\text{m}^3$
				Initial	Final	Initial	Final		Initial, Q_{si}	Final, Q_{sf}	Average		
31-May-12	8:00	Fine	002717	2.8021	2.9404	15040.14	15064.15	24.01	1.09	1.14	1.12	1607	86
6-Jun-12	8:00	Fine	002886	2.7851	2.8908	15067.15	15091.15	24.00	1.14	1.14	1.14	1638	65
12-Jun-12	8:00	Cloudy	003126	2.7368	2.8703	15094.15	15118.14	23.99	1.14	1.14	1.14	1635	82
18-Jun-12	8:00	Cloudy	003054	2.8166	2.8763	15121.14	15145.14	24.00	0.83	0.83	0.83	1194	50
22-Jun-12	8:00	Cloudy	003002	2.7527	2.8572	15148.14	15172.14	24.00	1.17	1.17	1.17	1688	62

Report on 1-hour TSP monitoring

Action Level ($\mu\text{g}/\text{m}^3$) - 312.5

Limit Level ($\mu\text{g}/\text{m}^3$) - 500

Date	Sampling Time	Weather Condition	Filter paper no.	Filter Weight, g		Elapse Time, hr		Sampling Time, hr	Flow Rate, m^3/min			Total Volume, m^3	TSP Level, $\mu\text{g}/\text{m}^3$
				Initial	Final	Initial	Final		Initial, Q_{si}	Final, Q_{sf}	Average		
1-Jun-12	8:42	Fine	002889	2.7877	2.7967	15064.15	15065.15	1.00	1.14	1.14	1.14	69	131
1-Jun-12	9:43	Fine	002888	2.7738	2.7816	15065.15	15066.15	1.00	0.99	0.99	0.99	59	131
1-Jun-12	10:45	Fine	002887	2.7855	2.7948	15066.15	15067.15	1.00	1.09	1.14	1.12	67	139
7-Jun-12	9:36	Fine	003113	2.7974	2.8008	15091.15	15092.15	1.00	1.14	1.14	1.14	68	50
7-Jun-12	10:42	Fine	003111	2.7749	2.7800	15092.15	15093.15	1.00	1.14	1.14	1.14	68	75
7-Jun-12	13:00	Fine	003135	2.7559	2.7616	15093.15	15094.15	1.00	1.14	1.14	1.14	68	83
13-Jun-12	9:20	Cloudy	003060	2.7747	2.7802	15118.14	15119.14	1.00	1.16	1.14	1.15	69	80
13-Jun-12	10:30	Cloudy	003058	2.8004	2.8048	15119.14	15120.14	1.00	1.14	1.14	1.14	68	64
13-Jun-12	13:00	Cloudy	003055	2.7997	2.8043	15120.14	15121.14	1.00	1.09	1.14	1.11	67	69
19-Jun-12	13:45	Cloudy	003008	2.7757	2.7805	15145.14	15146.14	1.00	1.11	1.11	1.11	66	72
19-Jun-12	14:52	Cloudy	003005	2.7666	2.7703	15146.14	15147.14	1.00	1.11	1.08	1.10	66	56
19-Jun-12	15:58	Cloudy	003004	2.7634	2.7677	15147.14	15148.14	1.00	1.08	1.08	1.08	65	66
25-Jun-12	8:50	Fine	002474	2.7196	2.7346	15172.14	15173.14	1.00	1.17	1.17	1.17	70	213
25-Jun-12	9:53	Fine	002387	2.8177	2.8330	15173.14	15174.14	1.00	1.17	1.17	1.17	70	218
25-Jun-12	10:57	Fine	002472	2.7317	2.7463	15174.14	15175.14	1.00	1.17	1.17	1.17	70	208



Location: CMA5a - Children Garden opposite to Pedestrian Plaza

Report on 24-hour TSP monitoring

Action Level ($\mu\text{g}/\text{m}^3$) - 181
Limit Level ($\mu\text{g}/\text{m}^3$) - 260

Date	Sampling Time	Weather Condition	Filter paper no.	Filter Weight, g		Elapse Time, hr		Sampling Time, hr	Flow Rate, m^3/min			Total Volume, m^3	TSP Level, $\mu\text{g}/\text{m}^3$
				Initial	Final	Initial	Final		Initial, Q_{si}	Final, Q_{sf}	Average		
31-May-12	8:00	Fine	002829	2.7697	2.9276	16027.43	16051.43	24.00	1.44	1.44	1.44	2071	76
7-Jun-12	17:45	Fine	003127	2.7585	2.8529	16059.94	16083.93	23.99	1.46	1.46	1.46	2104	45
12-Jun-12	8:00	Fine	003011	2.7592	2.9563	16083.93	16107.93	24.00	1.46	1.46	1.46	2104	94
18-Jun-12	8:00	Cloudy	002967	2.7676	2.9076	16110.93	16134.93	24.00	1.46	1.46	1.46	2099	67
22-Jun-12	8:00	Cloudy	003049	2.8341	3.0105	16137.93	16161.93	24.00	1.46	1.46	1.46	2098	84

* Due to lack of electricity supply, the 24 hr-TSP was rescheduled from 6 June 2012 to 7 June 2012

Report on 1-hour TSP monitoring

Action Level ($\mu\text{g}/\text{m}^3$) - 332
Limit Level ($\mu\text{g}/\text{m}^3$) - 500

Date	Sampling Time	Weather Condition	Filter paper no.	Filter Weight, g		Elapse Time, hr		Sampling Time, hr	Flow Rate, m^3/min			Total Volume, m^3	TSP Level, $\mu\text{g}/\text{m}^3$
				Initial	Final	Initial	Final		Initial, Q_{si}	Final, Q_{sf}	Average		
1-Jun-12	10:27	Fine	003138	2.7546	2.7703	16051.43	16052.43	1.00	1.47	1.47	1.47	88	178
1-Jun-12	13:00	Fine	003122	2.7536	2.7630	16052.43	16053.43	1.00	1.47	1.47	1.47	88	107
1-Jun-12	14:22	Fine	003120	2.7499	2.7578	16053.43	16054.43	1.00	1.44	1.44	1.44	86	91
7-Jun-12	13:25	Fine	003113	2.7672	2.7790	16056.94	16057.94	1.00	1.41	1.41	1.41	84	140
7-Jun-12	14:48	Fine	003131	2.7516	2.7612	16057.94	16058.94	1.00	1.43	1.43	1.43	86	112
7-Jun-12	16:00	Fine	003132	2.7543	2.7654	16058.94	16059.94	1.00	1.46	1.46	1.46	88	127
13-Jun-12	9:10	Cloudy	003013	2.7530	2.7596	16107.93	16108.93	1.00	1.44	1.44	1.44	86	77
13-Jun-12	13:18	Cloudy	002991	2.7672	2.7729	16108.93	16109.93	1.00	1.46	1.46	1.46	88	65
13-Jun-12	14:24	Cloudy	002989	2.7736	2.7767	16109.93	16110.93	1.00	1.46	1.46	1.46	88	35
19-Jun-12	9:20	Cloudy	003052	2.8073	2.8217	16134.93	16135.93	1.00	1.46	1.46	1.46	87	165
19-Jun-12	10:48	Cloudy	002034	2.8084	2.8236	16135.93	16136.93	1.00	1.46	1.46	1.46	87	174
19-Jun-12	14:59	Cloudy	003024	2.8102	2.8275	16136.93	16137.93	1.00	1.46	1.46	1.46	87	198
25-Jun-12	8:38	Fine	003041	2.8210	2.8324	16162.93	16163.93	1.00	1.46	1.46	1.46	87	130
25-Jun-12	9:55	Fine	003022	2.8228	2.8336	16162.93	16163.93	1.00	1.19	1.19	1.19	71	151
25-Jun-12	10:58	Fine	003020	2.8226	2.8359	16163.93	16164.93	1.00	1.46	1.46	1.46	87	152



Location: CMA6a - WD2 PRE Office

Report on 24-hour TSP monitoring

Action Level - 187.3 $\mu\text{g}/\text{m}^3$
Limit Level - 260 $\mu\text{g}/\text{m}^3$

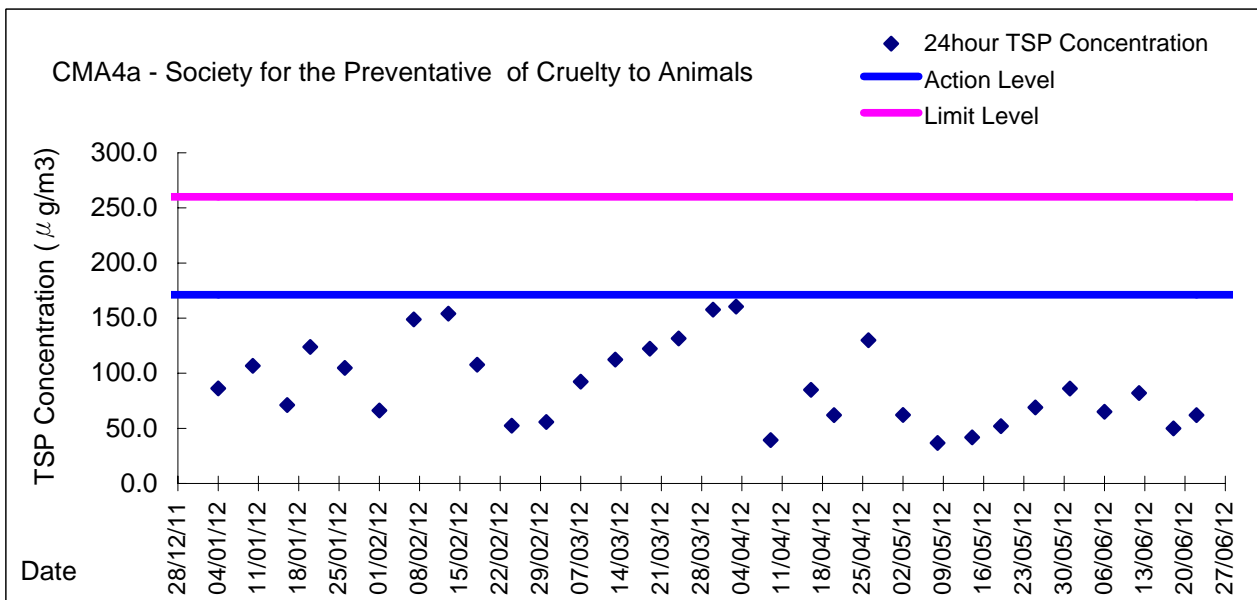
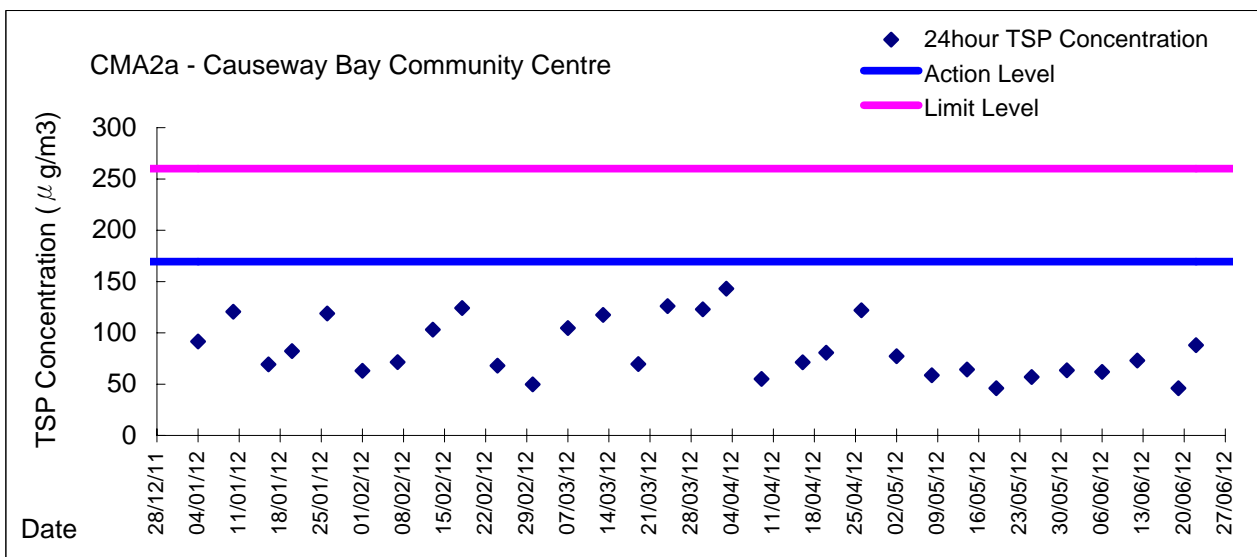
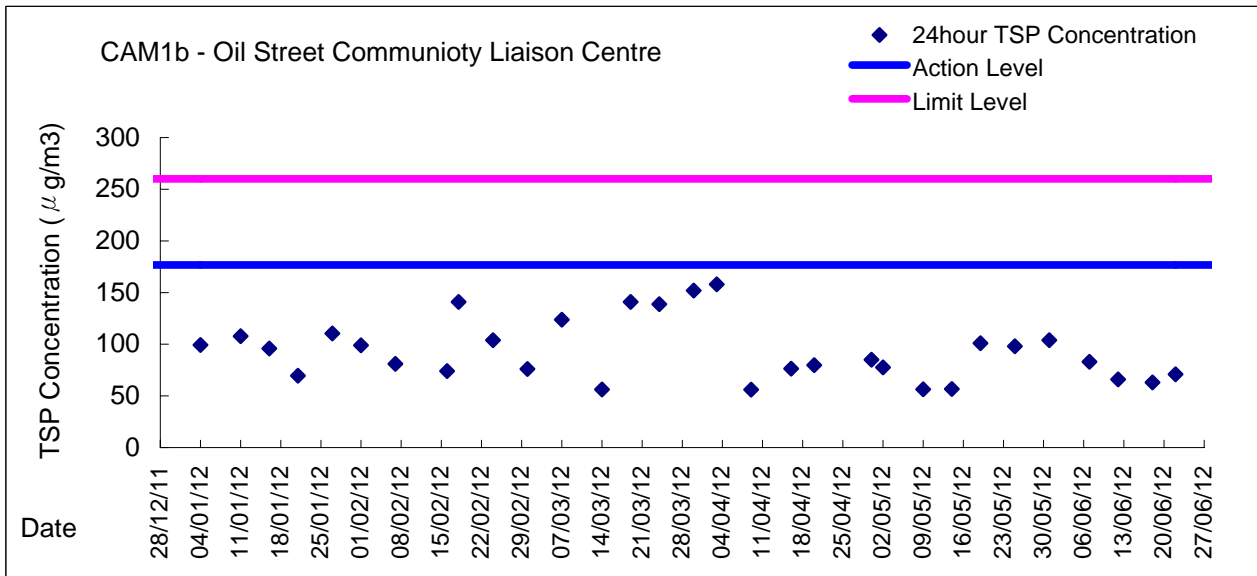
Date	Sampling Time	Weather Condition	Filter paper no.	Filter Weight, g		Elapse Time, hr		Sampling Time, hr	Flow Rate, m^3/min			Total Volume, m^3	TSP Level, $\mu\text{g}/\text{m}^3$
				Initial	Final	Initial	Final		Initial, Q_{si}	Final, Q_{sf}	Average		
31-May-12	8:00	Fine	002862	2.7745	2.8840	14343.79	14367.80	24.01	1.22	1.23	1.23	1766	62
6-Jun-12	8:00	Fine	003119	2.7435	2.8404	14370.80	14394.80	24.00	1.22	1.25	1.23	1777	55
12-Jun-12	8:00	Cloudy	003128	2.7537	2.8749	14397.80	14421.80	24.00	1.27	1.29	1.28	1845	66
18-Jun-12	8:00	Cloudy	002988	2.7697	2.8595	14424.80	14448.81	24.01	1.32	1.32	1.32	1898	47
22-Jun-12	8:00	Cloudy	003050	2.8074	2.9167	14451.81	14475.81	24.00	1.22	1.22	1.22	1760	62

Report on 1-hour TSP monitoring

Action Level - 300.1 $\mu\text{g}/\text{m}^3$
Limit Level - 500 $\mu\text{g}/\text{m}^3$

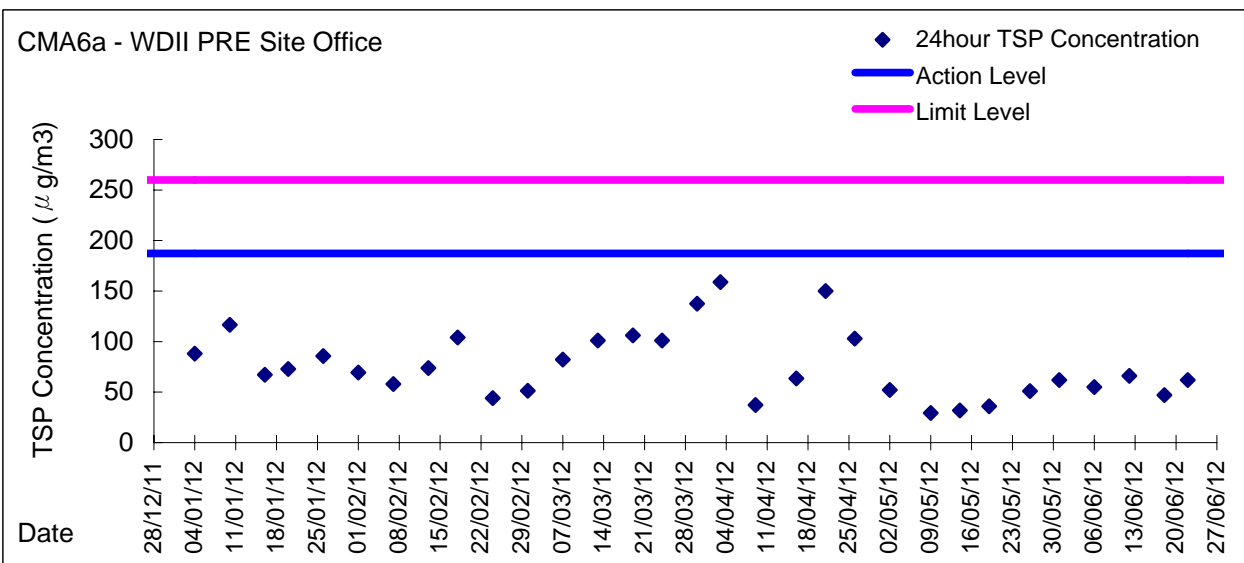
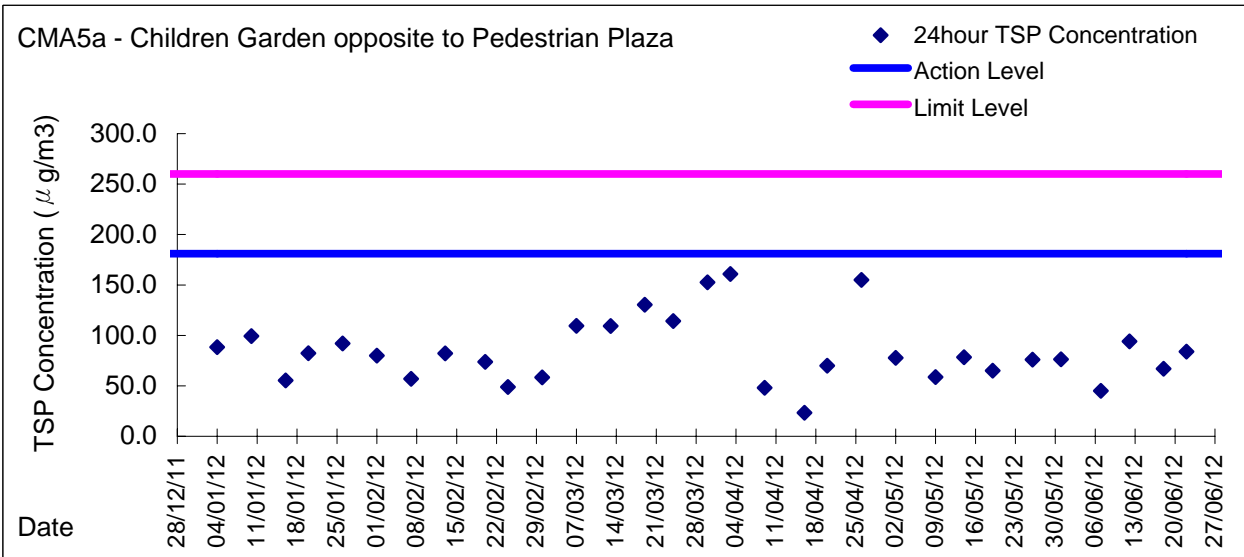
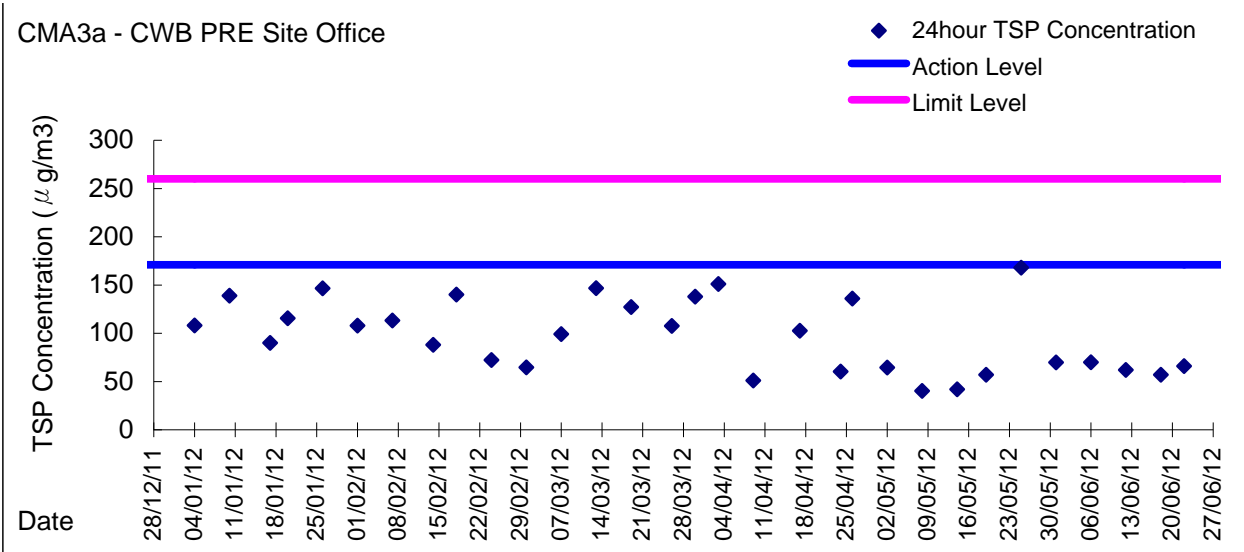
Date	Sampling Time	Weather Condition	Filter paper no.	Filter Weight, g		Elapse Time, hr		Sampling Time, hr	Flow Rate, m^3/min			Total Volume, m^3	TSP Level, $\mu\text{g}/\text{m}^3$
				Initial	Final	Initial	Final		Initial, Q_{si}	Final, Q_{sf}	Average		
1-Jun-12	10:20	Cloudy	003140	2.7534	2.7632	14367.80	14368.80	1.00	1.20	1.20	1.20	72	136
1-Jun-12	13:00	Cloudy	003123	2.7665	2.7767	14368.80	14369.80	1.00	1.25	1.25	1.25	75	136
1-Jun-12	14:10	Cloudy	003121	2.7565	2.7663	14369.80	14370.80	1.00	1.27	1.22	1.25	75	131
7-Jun-12	13:17	Fine	003134	2.7639	2.7682	14394.80	14395.80	1.00	1.22	1.20	1.21	73	59
7-Jun-12	14:35	Fine	003130	2.7546	2.7589	14395.80	14396.80	1.00	1.27	1.25	1.26	76	57
7-Jun-12	15:50	Fine	003129	2.7500	2.7538	14396.80	14397.80	1.00	1.22	1.22	1.22	73	52
13-Jun-12	8:55	Cloudy	003012	2.7668	2.7708	14421.80	14422.80	1.00	1.27	1.27	1.27	76	52
13-Jun-12	13:07	Cloudy	002992	2.7583	2.7621	14422.80	14423.80	1.00	1.32	1.32	1.32	79	48
13-Jun-12	14:12	Cloudy	002990	2.7744	2.7784	14423.80	14424.80	1.00	1.22	1.22	1.22	73	55
19-Jun-12	9:33	Cloudy	003051	2.7977	2.8103	14448.81	14449.81	1.00	1.22	1.22	1.22	73	173
19-Jun-12	10:39	Cloudy	002033	2.8052	2.8178	14449.81	14450.81	1.00	1.32	1.32	1.32	79	160
19-Jun-12	13:00	Cloudy	003025	2.8080	2.8217	14450.81	14451.81	1.00	1.22	1.22	1.22	73	188
25-Jun-12	8:54	Fine	003023	2.8109	2.8208	14475.81	14476.81	1.00	1.27	1.27	1.27	76	130
25-Jun-12	9:58	Fine	003021	2.8253	2.8362	14476.81	14477.81	1.00	1.17	1.17	1.17	70	155
25-Jun-12	11:00	Fine	003019	2.8129	2.8226	14477.81	14478.81	1.00	1.22	1.22	1.22	73	132

Graphic Presentation of 24 hour TSP Result

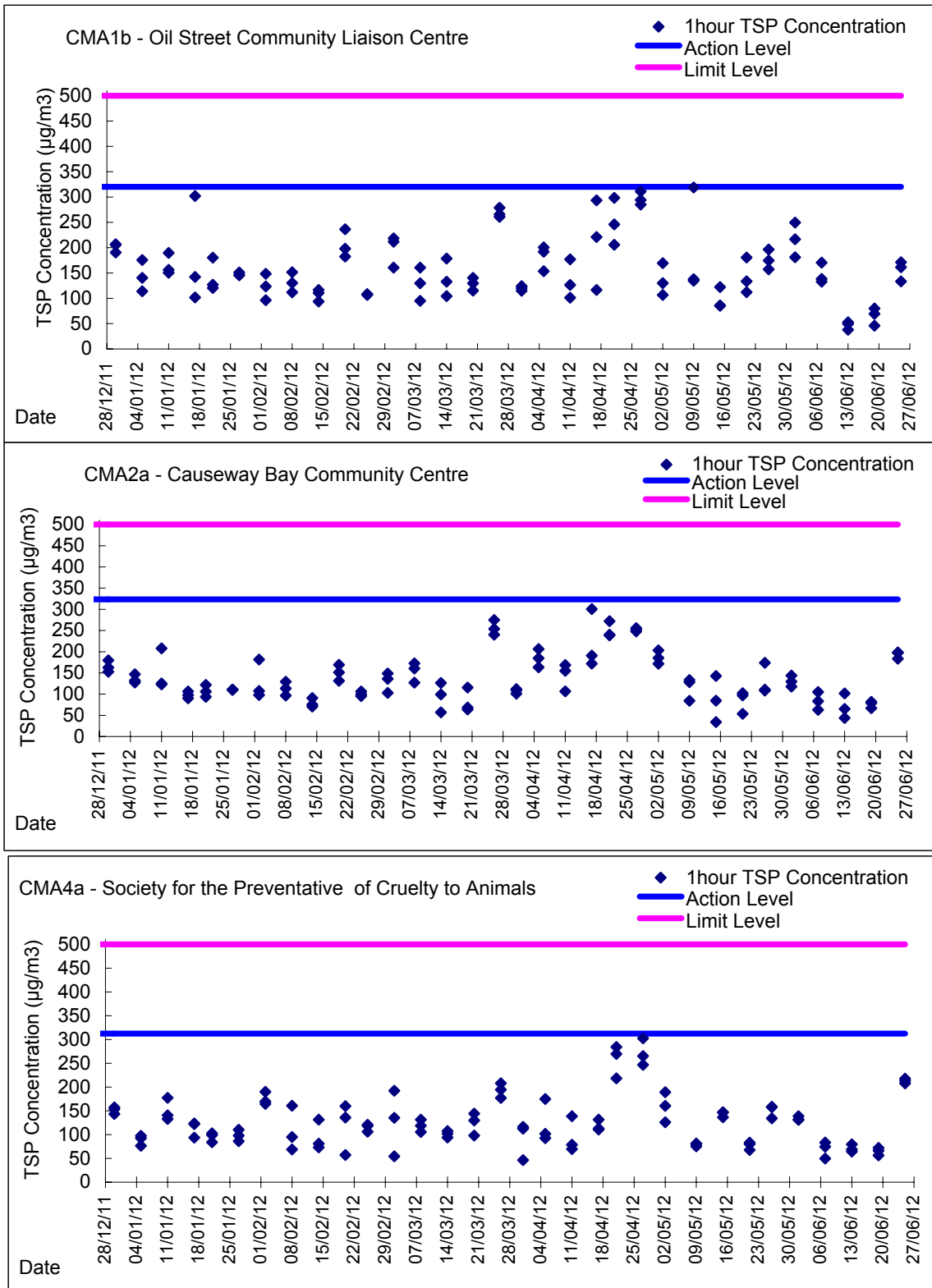




Graphic Presentation of 24 hour TSP Result



Graphic Presentation of 1 hour TSP Result



Graphic Presentation of 1 hour TSP Result

